

THE GENDER
CENTRE
INC

2020 Annual Report



Gender Centre at a Glance

982 Individual Clients

7799

Medium term Accommodation Nights

1404

Personal Counselling

2779

Crisis Accommodation Nights



772

Parents Attending Support Groups

645

Psychological Sessions

185

Counselling Clients

250

Psychological Clients

610

Families Supported

125

Better Access Clients Supported



6,092

TGD People and their Families Supported

✦ Contents

Index

1

Overview of the
Gender Centre

2

Who We Are

3

Services

4

Training &
Community

5

Governance

6

Acknowledgment



Patrons

‘**Sometimes**, you have to lead when there is no-one you can follow.’

Prof. Kerry Phelps AM, MBBS(Sydney), FRACGP, Hon D Litt (UWS)

Prof. Kerry Phelps AM is one of Australia’s best-known doctors, health communicators and public health and civil rights advocates. In 1994 she served as a member of the executive committee on the AIDS Council on NSW. She and her wife Jackie Stricker-Phelps began the Australian conversation on marriage equality back in 1998 and fought for marriage equality for almost two decades. They were involved in the Wear It With Pride campaign in 2010 celebrating the end of almost all discrimination under Federal law, and helped to lobby for same sex adoption in New South Wales

before becoming one of the first same sex couples to adopt under the new legislation. As first female President of the Australian Medical Association, Prof Phelps pioneered the first AMA policy on gender and sexual diversity and has been a prominent media advocate for LGBTIQ health issues.

Prof Phelps is a Patron of ACON’s Pride in Health+Wellbeing program. Prof Phelps is a GP and a conjoint Professor in the National Institute of Complementary Medicine at University of Western Sydney.

Patrons

‘the number of our people who live in poverty and hardship are so often hidden and forgotten.’



Dame Professor Bashir was the first woman appointed Governor of New South Wales. She taught at the Universities of Sydney and NSW, working with children’s services, psychiatry and mental health services, and Indigenous health programs. At the time of her appointment as Governor of New South Wales, she was Clinical Professor of Psychiatry at the University of Sydney; Area Director of Mental Health Services Central Sydney; and Senior Consultant to the Aboriginal Medical Service, Redfern and to the Aboriginal Medical Service, Kempsey. She was appointed an Officer of the Order of Australia in

1988 for her services to child and invested a Commander of the Royal Victorian Order (CVO) in 2006. In June 2014, Professor Bashir was named as a Dame of the Order of Australia for extraordinary merit in service to the administration, public life, and people of New South Wales, and as an advocate for improved mental health outcomes for the young, marginalised and disadvantaged.

Words from Our Chair

Zed Tintor

The Gender Centre continues to be an active voice on behalf of transgender and gender diverse (TGD) communities during some of Australia's most tumultuous moments.

Years after marriage equality passed into law the TGD community is still targeted by politicians and organisations reluctant to accept inclusivity and justice for all people. Since 2017, the Religious Rights Amendment Bill has loomed large and placed TGD people directly in the line of fire. Its outcome is far from clear, nor the middle and long-term effects on our community.

Ahead of us still is One Nation's Education Amendment Bill. If passed it would effectively stop TGD children from attending schools in NSW. As always, our community finds itself in the centre of this debate, but it's one that the Gender Centre remains passionate about. We continue to look forward for the opportunity to tell our stories and translate our communities experience in ways that help people understand the unique experience of being trans and gender diverse.

Additionally, we have the results of the important court case re: Imogen. Re: Imogen has helped reinforce two core ideas important to the work of the Gender Centre. Firstly, that the theories put

forward to discredit gender dysphoria or to frame it as a social contagion is risky and unsupported by the courts (as well as the Australian Medical Association and the Australian Psychologist Association to name a few). This is significant in that it reaffirms the important work that we do at the Gender Centre. Secondly, it reaffirms the earlier re:Kelvin judgement that children need to transition with the support of their parents/guardians.

In the midst of these current and ongoing arguments around trans and gender diverse people we're still telling the stories that matter. The TGD community has many supporters and there are many advocacy organisations in NSW talking about TGD people's experiences in the language of human rights. We thank these groups for their advocacy, we need as many allies to support our valuable work.

In 2020/21 we look forward to continuing to represent the TGD community and provide much needed services, care and remaining focused on the needs of trans and gender diverse people, families and young people.

in the work that we do with over 600 families in NSW

I would like to thank the staff of the Gender Centre for another extraordinary year. Without their tireless dedication, ongoing work and commitment to improving the lives of transgender and gender diverse people there could be no service like the GC. I also thank my fellow board members for another year of guiding the Centre to be the best it can be. In uncertain times it's been a great consolation to work with such an experienced and dedicated group of people.

Finally, I thank the GC clients for placing confidence in our organisation. We hope the service/s you receive effectively represented your diverse needs.



Phinn Borg

Executive Director

This year we've seen major challenges across NSW and Australia. Bushfires to COVID-19. In many ways it's changed the Gender Centre, but in all the important ways we're still the same. The Gender Centre is the frontline for the TGD community. From crisis accommodation and mid-term housing, from our regional services we hear the stories and we're touched by the lives of our community. There's still so much to do.

From our perspective being transgender, gender diverse, or gender questioning is complex. The core of the work that we do assumes nothing. We're here to help our community find their best lives. We're here to help families navigate the bureaucracy and to insure that they are able to access the same opportunities as every other family and young person. We're here to help young people validate their gender identity. Sometimes that means watching them blossom into the amazing human being that assumptions about identity have stopped them from becoming. Other times it means helping a young person come to terms with a range of other issues and giving them the options to understand who they are.

As always we're here to help our elders find the support that they need during one of the most precarious times there's ever been to be a TGD person. The implications for COVID-19 and our seniors, the impact of sickness, isolation and being transgender will continue to resonate through our community for years. That's not even considering what it means to live in a regional, rural or remote areas as so many of our NSW community do.

I'm proud of the year just past. The Gender Centre is growing and adapting. I'm excited to be leading the GC into another uncertain year, but with the knowledge that if we continue building on our strengths and the strengths of our community better things will come.

Who We Are: Our Values

Mission

Work to achieve equality for transgender and gender diverse people and their families.

Vision

To help build a society that is inclusive of transgender and gender diverse people, their families and allies.

Principles

To provide confidential, client centred services and promote a holistic,for integrated and strength based approach to service provision for the transgender and gender diverse community. We operate within a strong, transparent and accountable governance framework, Code of Conduct.

COVID-19 AND THE GC

Due to the unprecedented arrival of COVID-19 to every aspect of life NSW the Gender Centre has adapted its service to stay in touch with and support the community. Much of the work we do has moved online, however the need for our services is as high as ever and the Gender Centre remains the best place to call, connect and access for the TGD community.





COMMUNITY

Who We Are:

Us

The Gender Centre is the peak state-wide specialist multi-purpose service supporting TGD people at any stage of their transition (pre-mid-and post transition).

Clients

Between July 2019 and June 2020 the Gender Centre provided over 58,047 occasions of service provision provided to 3267 individual transgender, gender diverse, gender questioning people and their family members and work colleagues.

Parents, Families, Schools

During the 2019/2020 financial year the Centre worked with over 600 families providing front line support and wrap around services to engage both families and youth to remain connected. the Centre provided support to 107 schools.

Every year we report on the increase in demand for services for



2019/20 Parents Group Attendance

162

Sydney

120

Woollongong

10

Katoomba

195

Digital/
On Line

transgender young people, children and their families. this past 12 months has seen a dramatic increase in demand. From general questions and basic information, to advocacy, peer support initiatives, pathways for psychological referrals and counselling support. The Gender Centre has worked with our partners to deliver two new regional NSW parents support groups. One in Nowra for families further South of our Wollongong parents group.



Who We Are: Services

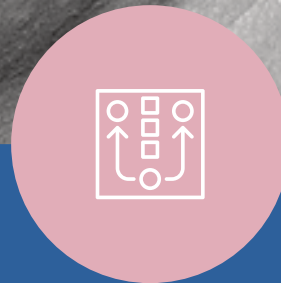


The Gender Centre offers
services across four domains



Health

- Home Visits
- Counselling
- Case Management
- Hospital Visits
- Outreach
- Family & Youth
- Psychological Support
- Aged and Ageing Support
- Nutrition
- Needle & Syringe Program



Advocacy & Support

- Support Programs
- Safe Space Project
- Non Binary
- School Support
- Youth
- Parents
- Community Engagement
- Seniors
- Women
- Men
- Partners



Education

- Anti-Violence Project
- Transition at Work
- Kits and Fact Sheets
- GC Library
- Resource Development
- Aged Support
- Social Events
- Workshops



Homeless

- Crisis accommodation
- Tenancy Support
- Case management
- GWS support services
- Transitional housing
- Homelessness support

Counselling 18-75+

The Gender Centre sees individuals dealing with mental health issues such as depression, anxiety, post-traumatic stress and personality disorders; those suffering from traumatic brain injuries with permanent and debilitating effects; and those on the autism spectrum. This past year, the occurrence of depression, anxiety and suicide ideation, all relating to gender identity and presentation, has once again been very high.

Here at the Gender Centre, counselling is a place where gender identity is seen as authentic and genuine, rather than something to be questioned or assessed. We offer therapeutic approaches to mental health issues, but also provide specialist knowledge and referral options to clients who wish to embark on medical (hormone replacement therapies and surgery) or legal transition (name and birth certificate changes).

185

Individual
Counselling
Clients

337

Email Contact
Counselling
Support

225

Aged 16-25
Counselling

121

Skype/
Zoom
Counseling

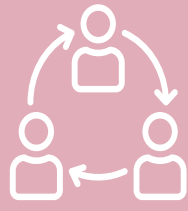
521

Face to Face
Counselling
Sessions

377

Telephone
Counselling
Clients

COUNSELLING



Health

Counselling

Psychological Support

Home Visits

Case Management

Hospital Visits

Outreach

Family & Youth

Aged and Ageing Support

Nurtition

Needle & Syringe
program

Counselling 5–18

Gender Centre sees individuals dealing with mental health issues such as depression, anxiety, post-traumatic stress and personality disorders; those suffering from traumatic brain injuries with permanent and debilitating effects; and those on the autism spectrum. This past year, the occurrence of depression, anxiety and suicide ideation, all relating to

gender identity and presentation, has once again been very high.

Here at the Gender Centre, counselling is a place where gender identity is seen as authentic and genuine, rather than something to be questioned or assessed. We offer therapeutic approaches to mental health issues, but also provide specialist knowledge

Psychological Support

The Gender Centre provided Free, short-term face to face psychological services for underserved groups. Clients presenting in this program were commonly facing issues surrounding gender, as well as high rates of suicide ideation, depression, anxiety and trauma. The individual sessions had a Cognitive

Behavioural Therapy focus, and showed a high success rate in improving mental health outcomes for these clients.

COUNSELLING TOPICS:

Fear Hormones Family Self-Harm
Passing Religion Cross-Dressing
Drug & Alcohol Bullying
Relationships Psychological Support
Anxiety Violence Accommodation
Isolation Harassment Sexual
Assault Suicide Gambling
Discrimination School Issues
Depression

229

Individual
Counselling
Clients

1215

One on One
Counselling
Sessions

Dubbo Sexual Health Clinic

The Gender Centre provides on site face to face services with Dubbo Sexual Health Clinic providing specialised outreach and group work to transgender and gender diverse people in this region on a regular basis. Gender Centre

staff drive in and conduct services with pre-arranged clients over a four day period every three months in the Dubbo, Bathurst, Orange, and Parkes and surrounding towns.

Outreach Services

The Gender Centre's Outreach service provides help for members of the community confined to hospital, homes, and in correctional facilities within NSW.

The outreach service is of significant benefit to clients in addressing their health needs and concerns, through the development and implementation of holistic case plans the outreach team provide wrap around service models that allow health and welfare concerns to be discussed and dealt with in a safe and

honest manner.

Wednesday night outreach to “at risk” street based sex workers who can access the outreach services from a number of locations from the surrounding areas of Surry hills and Darlinghurst, Newtown, the Great Western Highway Eastern Creek, Canterbury Road and Penrith.

Health Promotion Project

The Gender Centre provides on site face to face services with Dubbo Sexual Health Clinic providing specialised outreach and group work to transgender and gender diverse people in this region on a regular

basis. Gender Centre staff drive in and conduct services with pre-arranged clients over a four day period every three months in the Dubbo, Bathurst, Orange, and Parkes and surrounding towns.

T150

The Gender Centre provided Free, short-term face to face psychological services for underserved groups. Clients presenting in this program were commonly facing issues surrounding gender, as well as high rates of

suicide ideation, depression, anxiety and trauma. The individual sessions had a Cognitive Behavioural Therapy focus, and showed a high success rate in improving mental health outcomes for these clients.

T150 SERVICES: Safe Injecting Education Sexual Health ED With a TGD focus HIV Point of Care Testing HIV, Sexual Health & Blood Borne Virus Screening Information Referrals About all things TGD Health Related. Immediate HIV & HEP C Management Treatment Cervical Screening Sexual Health Ed with a TGD Focus HEP A & B Vaccination TGD Reproductive Advice HIV PrEP & PrEP Provision & Education Blood Monitoring (hormones etc).

Outreach Services

The Gender Centre's Outreach service provides help for members of the community confined to hospital, homes, and in correctional facilities within NSW. The outreach service is of significant benefit to clients in addressing their health needs and concerns, through the development and implementation of holistic case plans the outreach team provide wrap around service

models that allow health and welfare concerns to be discussed and dealt with in a safe and honest manner.

Wednesday night outreach to “at risk” street based sex workers who can access the outreach services from a number of locations from the surrounding areas of Surry hills and Darlinghurst, Newtown, the



OUTREACH

250

Outreach
Clients

1340

Episodes of
Service Delivery

358

Serving info on safe sex,
Blood born viruses, Alcohol,
Drugs, HIV, HEP C, Mental
Health, legal issues, Housing,

18,138

Items of Injecting
Equipment Distributed

881

Safe Sex Packs
Distributed

21,830

Safe Sex
Items

OUTREACH SERVICES:

SAFE Using Safe equipment Where the need arises Health Information HIV injecting Hormones STDs. Safe Sex Work. Transgender Health Concerns Home Visits for clients confined at home Court/Cell Outreach Available to all TGD clients Prison Visits Information Referrals About all things TGD Health Related.

Support Groups

The Client Support program plays a crucial role in providing assistance to clients whose needs are less intensive than those provided through counselling.

The Gender Centre provided a wide range of support groups, workshops and events throughout the 2019-2020 financial year. These services were provided through the Centre's Client Support Program.

SUPPORT GROUPS:

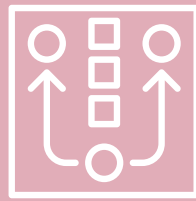
Parents Group Metro Transgender Youth Group Transtopia Information Talks With Guest Speakers Parents Group Wolloongong FTM COnnect Queer Agenda Group Parents Group Dubbo Woman's Group International Transgender Day of Visibility Transgender Day OF Remembrance Parents Group Nowra Young Women's Group Parents Group Katoomba Over 55s Group

Resource Development

The Gender Centre sees individuals dealing with mental health issues such as depression, anxiety, post-traumatic stress and personality disorders; those suffering from traumatic brain injuries with permanent and debilitating effects; and those on the autism spectrum. This past year, the

occurrence of depression, anxiety and suicide ideation, all relating to gender identity and presentation, has once again been very high.

Here at the Gender Centre, counselling is a place where gender identity is seen as



Advocacy & Support

Support

Groups

Safe Space Project

Far West Support

Youth and Family

School Support

Support Groups Family

Community

GWS Support

Regional & Remote



Feminising
Hormones Fact
Sheet



Masculinising
Hormones Fact



Documents of
Identity
Fact Sheets



Facial
Feminisation
Fact Sheets



Breast
Augmentation
Fact Sheet



Family Support
Fact Sheets



Surgery Fact
Sheets

INFORMATION KITS



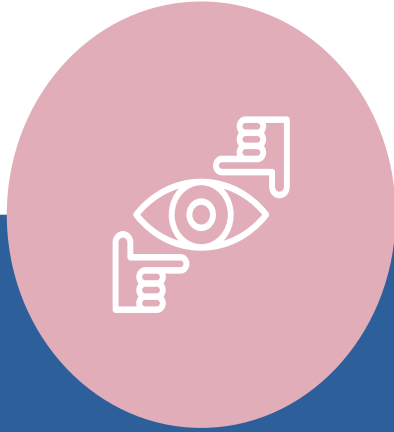
Resource Development

The Gender Centre sees individuals dealing with mental health issues such as depression, anxiety, post-traumatic stress and personality disorders; those suffering from traumatic brain injuries with permanent and debilitating effects; and those on the autism spectrum. This past year, the occurrence of depression, anxiety and suicide ideation, all relating to gender identity and



Polare News & Website

The Gender Centre provides on site face to face services with Dubbo Sexual Health Clinic providing specialised outreach and group work to transgender and gender diverse people in this region on a regular basis. Gender Centre staff drive in and conduct services with pre-arranged



Education

- Anti-violence project
- Workshops
- Transition at Work
- Kits and Fact Sheets
- GC Library
- Resource Development
- Aged Support
- Social Events



Website Unique Visits



WEBSITE Visits



Anti-violence Project

The Client Support program plays a crucial role in providing assistance to clients whose needs are less intensive than those provided through counselling.

The Gender Centre provided a wide range of support groups, workshops and events throughout the 2019-2020 financial year. These services were provided through the Centre's Client Support Program.



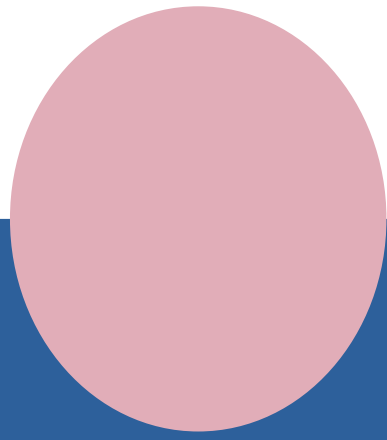
Service Evaluation

The Gender Centre sees individuals dealing with mental health issues such as depression, anxiety, post-traumatic stress and personality disorders;

those suffering from traumatic brain injuries with permanent and debilitating effects; and those on

SERVICE EVALUATION:

RESIDENTIAL DATA COLLECTION & ANALYSIS COLLATERAL FEEDBACK FROM OTHER AGENCIES & SERVICE PROVIDERS ANALYSIS OF REASONS FOR MONITORING DISCHARGE DATA COLLECTION RELATING TO REFERRAL PATTERNS MONOTRING DATA RELATING TO ATTENDANCE STRENGTHENING FOCUS ON CASE MANAGEMENT PRACTICES INCREASED AWARENESS & FOCUS ON WH&S ISSUES LEVEL OF DEMAND FOR PARTICIPATION NATIONAL, STATE & LOCAL MECHANISMS, STRATEGIES & ACTIVITIES MONITORING OF CIRCULATION LEVELS OF PRINT RESOURCES FEEDBACK FROM CLIENTS REGARDING COMPLAINTS COMPLEMENTS & SUGGESTIONS ONGOING COMMITMENT TO ENGAGING IN QUALITY IMPROVEMENT



Homelessness

- Crisis accomodation
- Tenancy Support
- Case management
- GWS support servives
- Transitional housing
- HomelessnessPrevention



Specialist Housing

The Client Support program plays a crucial role in providing assistance to clients whose needs are less intensive than those provided through counselling.

The Gender Centre provided a wide range of support groups, workshops and events throughout the 2019-2020 financial year. These services were provided through the Centre’s Client Support Program.

HOMELESSNESS RESPONSE:

- Early Intervention
- Complex Needs Intensive Response
- Crisis & Transitional Response
- Rapid Rehousing Response

Crisis Accommodation



Crisis Residence



Crisis Beds



Transitional Properties



Medium Term Clients



Short Term Bed Nights Provided



Medium Term Bed Nights Provided



Short Term Clients

80 Clients Housed across 8,578 Bed Nights

Support Provided



Assistance with Challenging Behaviour



Other Specialised Services



Culturally Specific Services

Needs Identified



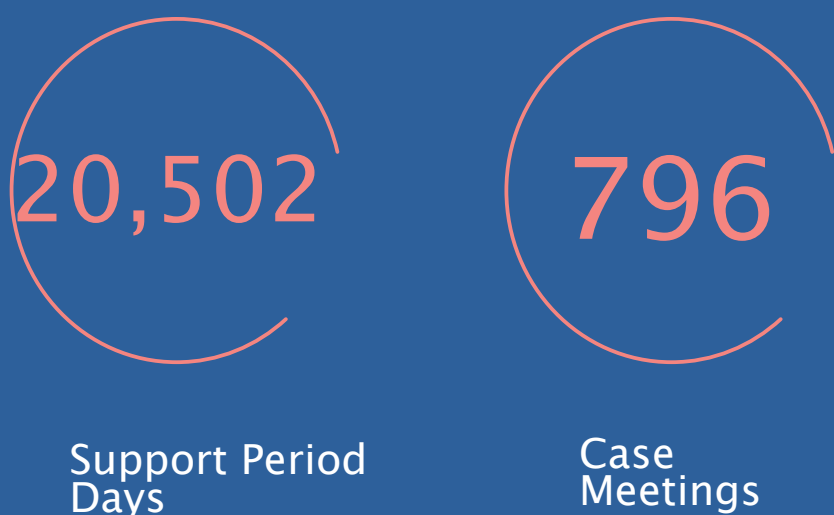
Support Provided



Referrals Arranged



Client Support



Case Management



Contact hours with SHS Clients



Clients

Of 171 Clients
74.6% Achieved
their Goals

Greater Western Sydney



Total Support



Total Clients

CASE MANAGEMENT:

Education Strategies, Realistic Goals, Support Planning, Comfortable Progress, HEALTH, Income, Housing Short Term Goals, Mid Term Goals Long Term Goals.

Who We Are: Training & Community





Training

- Committees & Consultations
- Agency Networking
- Education & Training
- Staff Training & Development
- Training for Service Providers
- Training



Community

- Support Programs
- Community Engagement
- Safe Space Project
- Seniors
- Non Binary
- Women
- School Support
- Men
- Youth
- Partners
- Parents

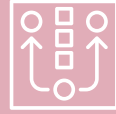


AGENCY NETWORKING

Staff at the Gender Centre have continued to network with a wide range of services over the

2019-2020 year. Some of these services include:

T150 SERVICES: Royal Prince Alfred (RPA) Sexual health, St Bede's Home South Hurstville, Anglicare, Wise Employment Marrickville, APM Employment Services, Ingleburn Community Care Northern Beaches, SW Sutherland Hospital, SW ACAT South Care, Department of Corrective Services, Westmead Children's Hospital, Resource and Education Program for Injecting Drug Users (REPIDU), Taylor Square Medical Clinic, the Asylum Seeker Centre, NSW Department of Education & Training, Sex Workers' Outreach Project (SWOP), NSW Anti-Discrimination Board, Youth Block, Catholic Care (ALIVE Program), NSW Department of Housing Burwood, NSW Police Surry Hills, NSW Department of Housing Surry Hills, Taylor Square Medical Centre, Dr Hespe Glebe Family Medical practice, Cerebral Palsy Association, Wentworth Housing, Hume Housing, The Marie Bashir Unit, Concord Hospital Mental Health Centre, The Royal Prince Alfred Hospital Renal Dialysis Unit, NSW Federal Police, Bobby Goldsmith Foundation, Employers Federation, NSW Police Service, Homelessness NSW, Salvos Gorman House, The Women's Housing Company, YWCA, Centrelink, Dubbo Sexual Health, Haymarket centre, ACON, NCOSS, Oasis program, Sydney Women's Homelessness Alliance, Menai High School, Inner City Legal, Centre Twenty 10, Ashfield Community Health Centre, Uniting Care, Marrickville Community Health Centre, Marrickville police, Aboriginal medical service, Aboriginal legal service, Tony Merritt (ATAPS program), Long Bay Jail, Head Space, City of Sydney Council, TAFE NSW, Wesley Mission, Medicare CAPS program, Women And Girls' Emergency Centre (WAGEC), Vinnies Burwood.



Training

Committees & Consultations

Agency Networking

Education & Training

Staff Training & Development

Training for Service Providers

Training

Committees & Consultation

Staff have maintained their representation on or liaised with a number of committees, interagency groups and working parties that address issues of priority to the client group of the Gender Centre. These include:

SHS Interagency meetings, Safe Relationships Project meetings, **Consumer & Community Advisory Council (SLHD)**, DHIG: District Homelessness Asylum Itinerancy Group, **Asylum Seekers Interagency**, The NSW LGBTI Domestic and Family Violence Interagency, **Premier's Priority on Reducing Homelessness**, Greater Sydney Ageing LGBTI Interagency, **Professional Counsellors Meetings**, Health Interagency, **Show-Net Meeting**



EDUCATION AND TRAINING AT THE GENDER CENTRE

The Gender Centre has continued to provide training to a broad range of services regarding a variety of issues relating to gender and to transgender and gender diverse persons.

The aims of the education packages are:

To encourage service providers in all areas to work effectively with transgender and gender diverse clients, and provide support to employers in workplaces where a staff member is in transition.

To encourage employers to uphold anti-discrimination legislation and employ transgender and gender diverse persons who present as the best person for a position.

To encourage all organisations to treat all people, including transgender and gender diverse people, equitably.

To support organisations to develop policy and procedures with the intent of affording transgender and gender diverse people equitable rights, opportunities and access.

The steady demand for education and training from the Gender Centre has served to reinforce the improved commitment of the wider community to become informed about transgender and gender diverse people.

The response from those attending the training has been overwhelmingly positive. During the 2019-2020 financial year training was provided to over 600 individuals through the corporate sector, specialist women's services, universities, and employers

STAFF TRAINING & DEVELOPMENT

Staff have attended the following training seminars and forums during

2019/20:

Domestic Violence and A.D.V.O.s, [Clinical and Research Updates in Alzheimers and Fronto-Temporal Dementia](#), 2nd National LGBTI Ageing and Aged care forum, [Case Discussion Complex Trauma and Co-Occurring Issues](#), Principles in Practice-Supporting Survivors of Complex Trauma, [Working Collaboratively to Address the Social and Emotional Wellbeing of Older LGBTI People](#), Case Discussion Dissociative Identity, [Mental Health Practitioner Course](#), Working Together to Support People Who Self-Harm, [Working Collaboratively to Manage Co-Morbid Mental Health and Methamphetamine Use](#) Timely Diagnosis of Dementia, Working with Clients with Hepatitis C - Hepatitis NSW, [LGBTI Aging - Australian Association of Gerontology](#), The Aged Rights Service Forum, [Living Well, Living Longer Seminar](#), [The Suicide Closet Workshop](#), Fire Training, [Governance Workshop](#), Hoarding Workshop, [Mental Health Recovery Workshop](#), Jung Society Workshop: Ageing; [Planning Ahead Seminar](#); Client Information Management Systems, [Trauma-Informed Care for Caseworkers](#), First Aid Course, [Mental Health First Aid](#).

SERVICE PROVIDER TRAINING TO:

Tafe, [NSW Police Force](#), Mental Health Units, [Accident and Emergency Departments](#), Schools, [Universities](#)

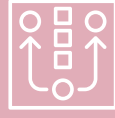


GENDER CENTRE AMBASSADOR: Katherine Wolfgramme

Another outstanding year from Katherine raising funds and spreading the word about the Gender Centre's work amongst our allies and communities.

Katherine's role as president of the 2019 Transgender Day of Remembrance committee produced one of the most

powerful TdoR events the GC has held and the 20th anniversary of the Day of Remembrance was something to behold. We thank her for her amazing work and look forward to another great year.



Community

Gender Centre
Ambassador

Media

Transgender Day of
Remembrance

Podcasting

Transgender Day of Remembrance

For a number of years the Gender Centre, in partnership with the NSW Police Force, the City of Sydney and the Inner City Legal Centre have held the annual Transgender Day of Remembrance on two dates. One on the actual day of remembrance (20 November) and the second on the closest Friday to that date at NSW Parliament House. TDoR 2019 included a diverse range of speakers from a range of backgrounds and identities.

The highlight of the event occurred in the final moments of the remembrance when with the swelling chorus of the Sydney

Gay & Lesbian Choir community and allies were invited to light a candle and place it amongst fallen Jacaranda blossoms at the base of the tree. It was an extremely moving tribute to the transgender and gender diverse dead and the Gender Centre would like to thank all those who worked incredibly hard to make 2019 TDoR one of our most successful.





COUNTING THE DEAD



MEDIA

The Gender Centre Media Team worked hard this year to get the word out about the Gender Centre's amazing services.

Newspaper articles, interviews from professional media to high students, radio

Polare Digital kicked off and news and updates on TGD health and wellbeing is

available fortnightly.

Highlights include our video for Trans Day of Visibility as well as working with City of Sydney on the Counting the Dead Podcast.



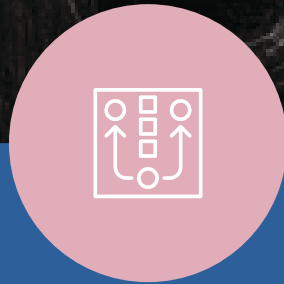
PODCASTING

This year the Gender Centre produced two podcasts. The first, Trigger Happy involved two GC counsellors/psychologists discussing the best way for community members to deal with the most stressful aspect of being a trans person. We're looking forward to releasing season 2 in December 2020. We also launched,

Counting the Dead, a podcast looking into the missing numbers around trans and gender diverse deaths in Australia. With two very successful episodes available we're awaiting the end of a pivotal trial before we can wrap up.

Who We Are: Governance





Governance

Board of Directors

Current Directors

Staff





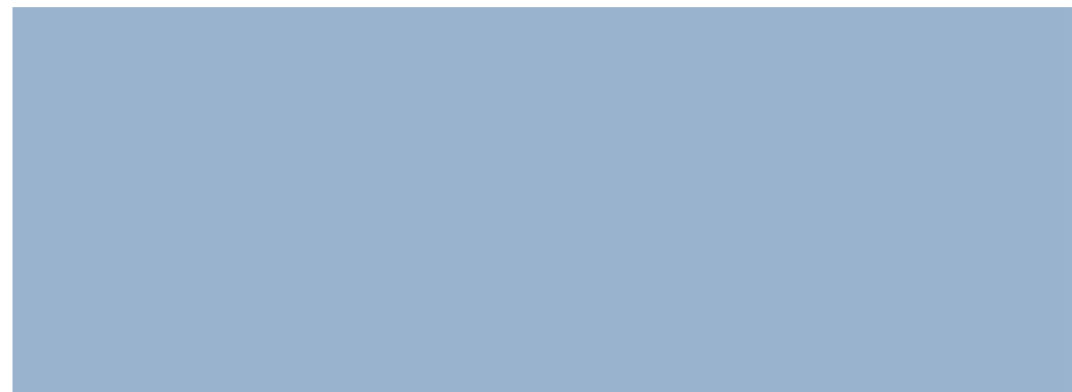
BOARD OF DIRECTORS

The directors are constituted in the terms of the "Associations Incorporation Act 1984" and the organisation in general, including the director's functions as provided by the act and the No service can function well without

an effective and committed Board, and as Executive Director of the Gender Centre I look forward to many more years of committed and dedicated Board members assisting the service to function effectively.

CURRENT BOARD:

Zed Tintor **President**
 Caroline Bugg **Treasurer**
 Kimmi Everson **Vice-President**
 Maria Attard **Secretary**
 Col Eglington
 Maggie Smith
 Virginia Makay
 Rachel Smith
 Eva Karaginnis
 Timon Chakma (Resigned)



Staff:Phinn Borg **Executive Director**Elizabeth Ceissman **Senior****Case Worker**Candy Jacques **Senior****Counsellor**Eloise Brook **Media Manager**Robert Knapman **Case****Worker**Imogen Bracken **Case Worker**Annika Mai **Case Worker**Emily Burgen **Case Worker****Outreach**Birdie **Outreach**Edwina Smith **Case Worker**Natalie De Silver **Peer****Support**Alex Dickson **Case Worker**
(resigned)**Gender Centre****Ambassador**

Katherine Wolfgramme

Psychologists

Dr James Morandini

Kiara Fraser

Naomi Radom

Ella Wufong

Ellis Hartland (resigned)

Dr Sinead Berry (resigned)

Volunteers

Gaye Stubbs, Annie Loobie

Students

Jamie

Dipicka

Tricia Frost

ContractorsTim Kitto, Serena Cooray,
Aquila Wolf Wild, Trent
Clarke, Lisa Cuda,

Who We Are: Acknowledgement

5





Acknowledgement

Committees & Consultations

Agency Networking

Education & Training

Staff Training & Development

Training for Service Providers

Training



OUR SUPPORTERS

I would like to thank all the individuals and organisations who kindly donated their time, effort, patience, goods and services and/or cash donations to the Gender Centre throughout this financial year.



OUR FUNDING BODIES

The Gender Centre would like to thank our funding bodies, the Department of Family and Community Services (Specialist Homelessness Service (SHS) program), Sydney Local Area Health District for their ongoing financial support during the past year, Wentworth Community Housing, Far West LHD and Central and Eastern Sydney Primary Health Network.

ALBION ST T150 CLINIC:

Provide a peer worker once a week.

ONE OFF GRANTS:

City of Sydney, Inner West Council, Sydney University Union, Aurora Group, Street Smart, Snow Foundation.

NSW DEPARTMENT OF COMMUNITIES & JUSTICE FUNDED PROJECTS:

Homelessness prevention and community awareness of homelessness;

Early intervention homelessness support (i.e. Post crisis support);

Supported homelessness accommodation service;

Crisis and transitional supported independent living (i.e. case management)

CENTRAL & EASTERN SYDNEY PRIMARY HEALTH NETWORK PROJECTS:

Supporting and providing services to clients experiencing gender and health related issues;

Supporting and providing services to clients experiencing gender and health related challenges;

Provide short term face to face psychological therapies to transgender, gender diverse and gender questioning people experiencing mild to moderate mental health concerns.

SYDNEY LOCAL HEALTH DISTRICT FUNDED PROJECTS:

Supporting and providing services to clients experiencing gender and health related issues;

Providing individualised specialist counselling services;

Providing specialised support groups for transgender youth, parents and families;

Providing wrap around health support services to transgender and gender diverse people;

Provided a secondary NSP program;

Provide expert consultancy and advice to school counsellors and principals to retain gender questioning youth in the education system;

Provide outreach support to transgender and gender questioning sex workers; Maintaining links with other support organisation.

WENTWORTH COMMUNITY HOUSING PROJECTS:

Homelessness prevention and community awareness of homelessness;

Early intervention homelessness support (i.e. case-management);

Post crisis support;

Supported homelessness accommodation service;

Crisis and transitional Supported independent living (i.e. case-management).

FAR WEST LOCAL HEALTH DISTRICT:

Provision of on-site visits to Dubbo, Orange, Bathurst Sexual Health Service.

Provide Western NSW LHD community's access to the statewide specialist counselling support services of The Gender Centre;

Provide a specialist case worker to engage transgender and gender questioning clients with specialist case management, support, information, referrals and access to resources.



THE GENDER CENTRE
SERVICES FOR THE
TRANSGENDER AND
GENDER DIVERSE COMMUNITY **INC**

WRITING &
DESIGN: ELOISE
BROOK

PHOTOGRAPHY:

ROBERT KNARMAN,
CLARE WOODS